

515-555 Roger Williams Avenue, Highland Park

New Retail for Lease in Ravinia



- Approximately 5,485 divisible square feet available for retail
- 30 new condo quality apartments
- 3 blocks to Pace Bus #213
- In the heart of Ravinia business district
- Metra Ravinia station across the street
- Ravinia Music Festival blocks away
- 42,396 population in a 3-mile radius
- \$153,643 median household income in a 1-mile radius
- Steps from charming boutiques and restaurants

For more info contact:

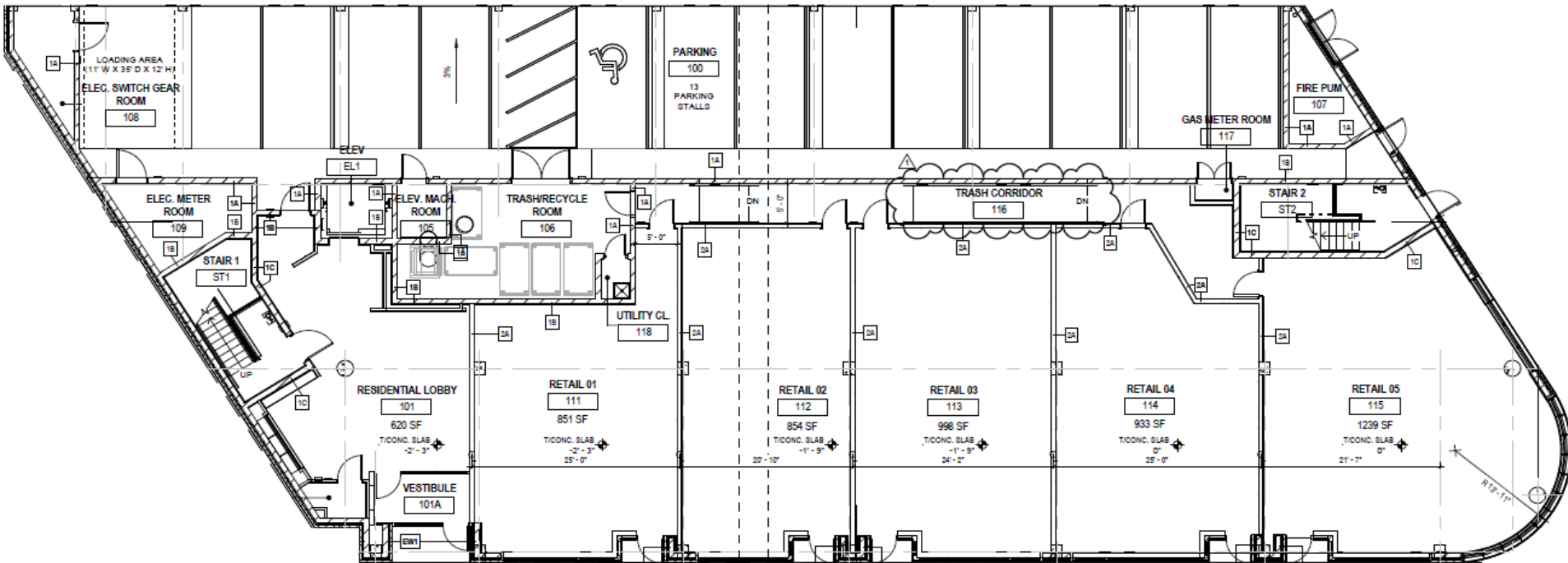
Hunter Gleber
773-736-6563
hgleber@imperialrealtyco.com

Theron May
773-736-6461
tmay@imperialrealtyco.com

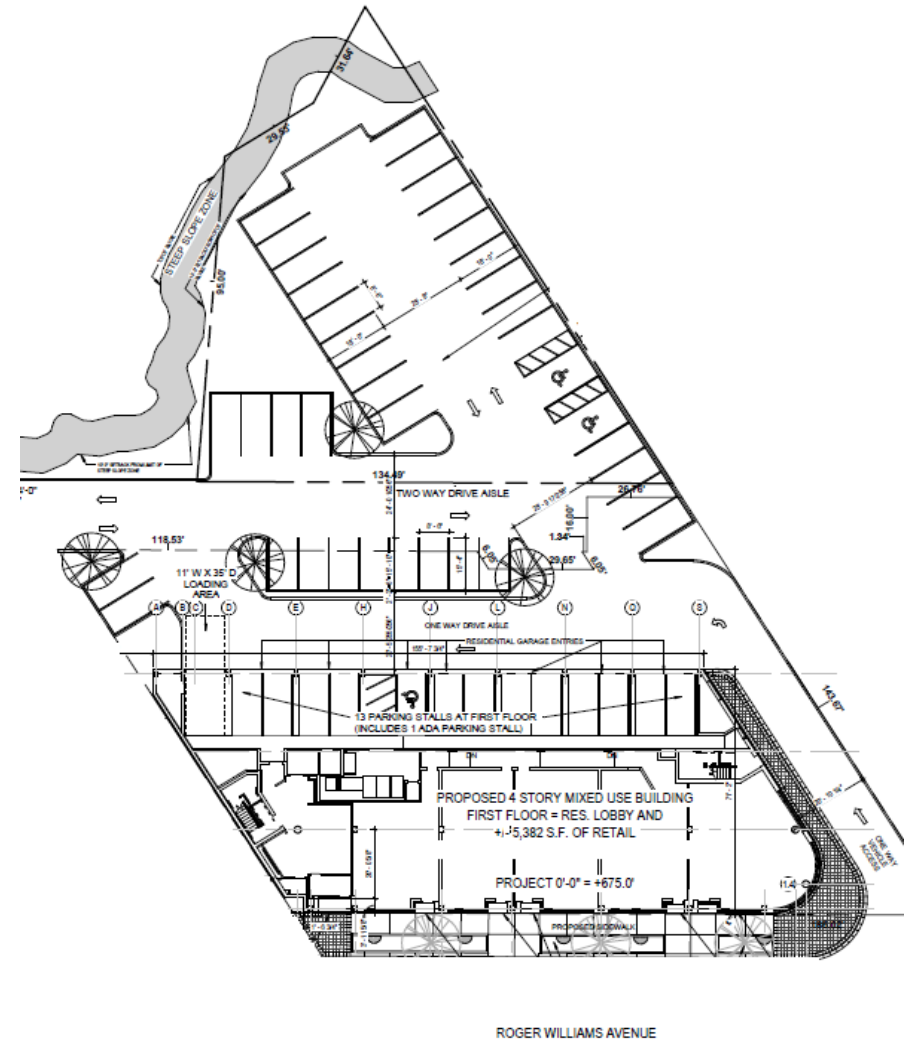
Neighboring Tenants



+/- 5,485 Divisible Square Feet Available



Aerial Parking Map



Dedicated On Site Retail Parking: 21 spaces

City Parking Lots: Shown in green